

Thank you for purchasing our equipment. Please read this manual carefully and heed the safety warnings and instructions before installing, using or repairing the equipment. This will ensure not only the protection of persons, but also the long life of the equipment.

TECHNICAL PARAMETERS

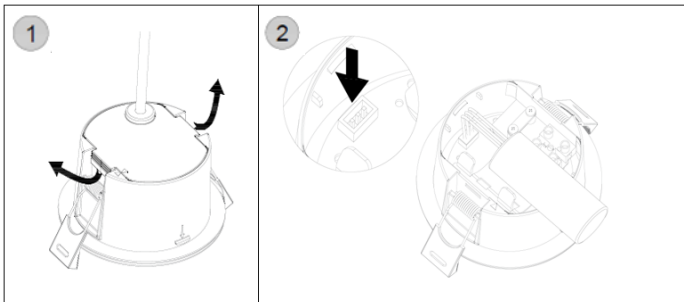
Power input	1,5W
Power	AC 220 - 240V
Luminous flux	200lm
Light temperature	6500K
LED lifetime	50.000 hours
Batteries	LiFePo4 3,2V 1800mAh
Battery life in standby mode	Min. 3hours
Coverage	IP65
Operating temperature	-20°C to 50°C
Dimensions	100x64mm

INSTALLATION

BATTERY CONNECTION

Switch off the power supply before connecting the battery!

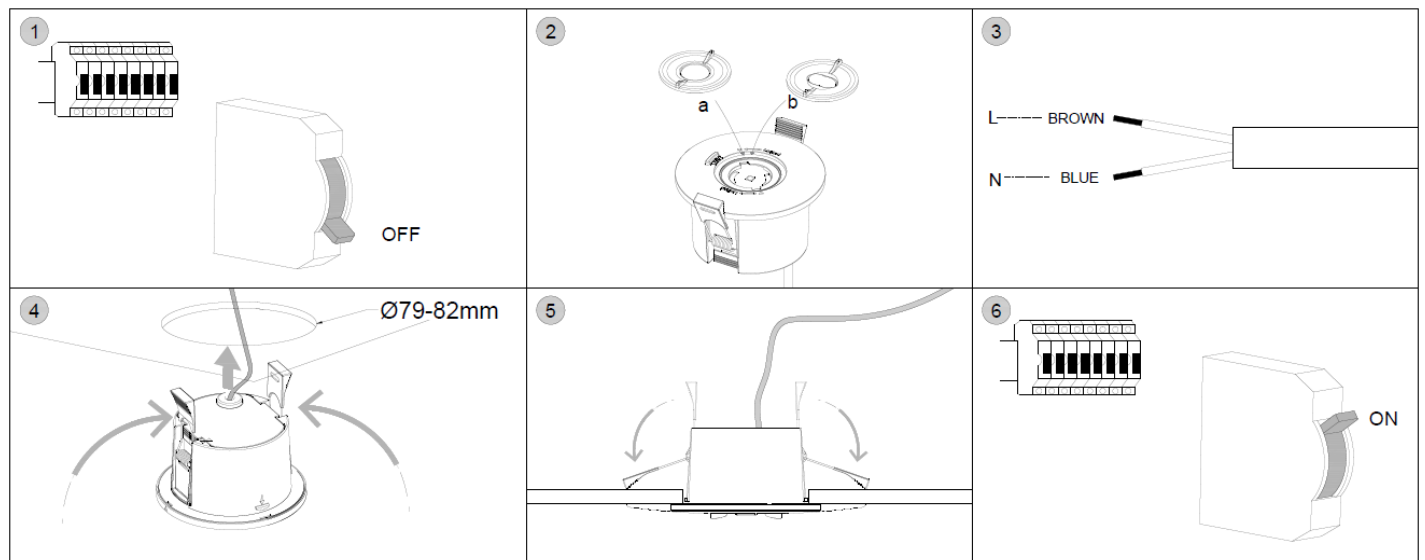
1. Open the top cover of the device
2. Connect the battery to the connector.



INSTALLATION OF EQUIPMENT

Switch off the power supply before installation!












1. Set lens A or B depending on preference.
2. Connect the power cord. (Brown - L, Blue - N)
3. Press the spring and insert the device into the hole in the ceiling/panel.
4. After releasing the spring, it fixes the handles of the device to the ceiling.
5. Switch ON the power supply.



DEVICE TESTING

When the device is connected to the mains:

- The battery discharge test occurs 24 hours after the battery is fully charged when the device is first switched on.
- **The Monthly functionality test** is performed once a month and takes about 3 minutes. It is a test of battery connection, battery discharge and LED PCB connection.
During the test, the green indicator will flash green (flashing: 0.2s on / 0.2s off).
- **The Annual duration and connectivity test** will be performed randomly on one of the 300th to 365th day of each year and the test takes about 3h. It tests whether the device meets the time requirement of battery duration, and the connection of the LED PCB and battery.
During testing, the green indicator will flash green (blinking: 1s on/1s off).

Mode	Events	Status	LED indicator	LED
Main power is on	Without action	No problem	The green indicator lights up	
	Without action	Battery fault	The red indicator lights up	
	Without action	LED PCB fault	Red indicator flashes slowly (flashing: 1s on/1s off)	
	Press the test button for 10 seconds	Reset the device. Monthly and annual testing timers are reset.	Green indicator flashes three times (blinking: 0.5s on / 0.5s off)	
Monthly testing (Device Functionality Test)	Starts automatically (test time approx. 3 min.)	No problem	The green indicator lights up	
		Battery fault	The red indicator lights up	
		LED PCB fault	Red indicator flashes slowly (blinking: 1s on/1s off)	
Annual testing (Duration and connectivity test)	Starts automatically (test time approx. 3h)	No problem	The green indicator lights up	
		Battery fault	The red indicator lights up	
		LED PCB fault	Red indicator flashes slowly (blinking: 1s on/1s off)	
		Battery capacity did not meet the requirement	Red indicator flashes quickly (blinking: 0.2s on / 0.2s off)	
Main power is off	Three-hour emergency mode activated	Functional batteries	Off	

Notes:

- Manual testing will not affect monthly or annual automated testing.
- When the device has finished testing, press the test button to cancel the signaling status.
- The test cannot be performed if the solid light is not on.
- The test will not be performed if the emergency mode is active.

Manual testing

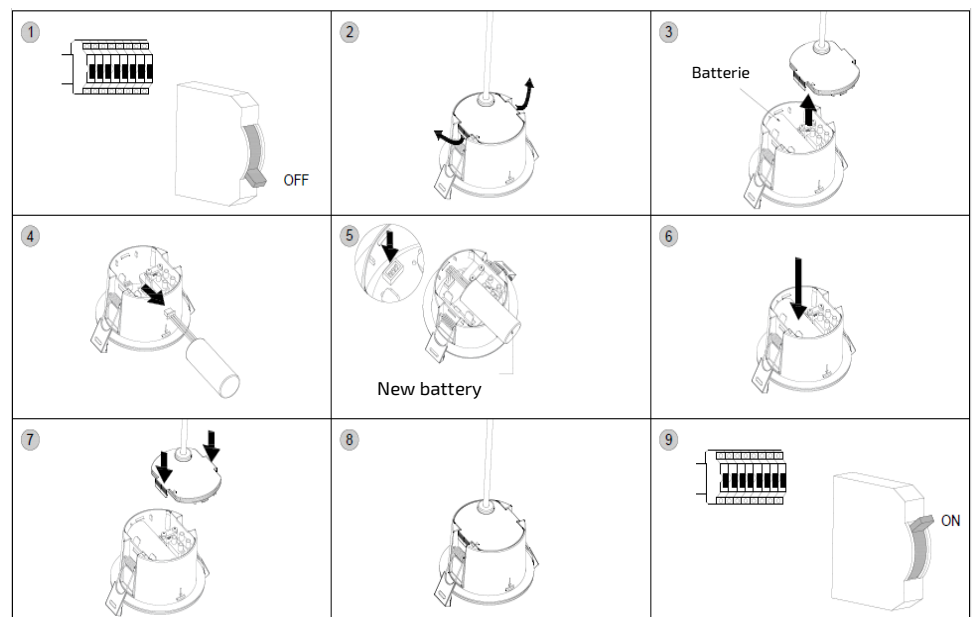
- Press and hold the test button for **2 seconds** to initiate the **emergency mode**. Release the button to stop.
- Press the test button for **3-5 seconds** to start the **battery duration (same as Monthly testing)**.
To end the test, press the test button for 1-2 seconds.
- Pressing the test button for **5-8 seconds** starts the **device functionality (same as Annual testing)** test and lasts for 60 seconds.
To end the test, press the test button for 1-2 seconds.
- Press the test button for **more than 10 seconds** to reset the device, including the time of monthly and annual tests.

GENERAL INFORMATION

- Installation should be carried out in accordance with the current edition of the national wiring regulations. If in doubt, consult a qualified electrician.
- Maximum input voltage: 220V-240V AC 50/60Hz.
- Make sure all wiring is correct.
- Make sure that the power supply is switched off before starting installation or maintenance.
- Class II. with double insulation and earthing is not required.
- This luminaire is not dimmable.
- When the battery is charging, all the green indicators light up. During a situation where mains power is not available and the battery is discharging, all green LED indicators will be off.
- It is the installer's responsibility to ensure that the equipment wiring meets the maximum total load.
- There is a green indicator in the middle of the device. It will light up when the power is turned on. If the device is in emergency mode, the indicator will not light.
- To simulate a mains power failure, switch off the power supply. However, wait at least 24 hours after connecting the device before doing so.
- When the equipment ceases to meet the rated operating time. The battery should be replaced with a battery of the same type, voltage and rated power in AMP hours.
- All emergency lighting tests shall be recorded.

BATTERY REPLACEMENT

1. Switch off the power supply
2. Open the top cover
3. Separate the top cover
4. Remove the old battery
5. Connect the new battery to the connector
6. Insert the battery into the hole in the device
7. Close the top cover of the device
8. Make sure the cover is firmly in the device
9. Switch on the power supply



DEVICE TESTING RECORD

Installation / Test Recording	Luminaire serial number / ID							
	Installed by:	Date:						
Supplier/Vendor	Date:							
	Date:							
Monthly test	YEAR 1		YEAR 2		YEAR 3		YEAR 4	
	Signature	Date	Signature	Date	Signature	Date	Signature	Date
	1							
	2							
	3							
	4							
	5							
	6							
	7							
	8							
	9							
	10							
11								
12								

The light source of this luminaire is non-replaceable, at the end of its service life the entire luminaire must be replaced and disposed of in a designated place. This product contains a light source that for design reasons cannot be removed for verification and therefore the entire product is considered a light source.

The product has been issued with a CE declaration of conformity in accordance with the applicable regulations. On request from the manufacturer: info@solight.cz, or downloadable from www.solight.cz.



SOLIGHT

Solight Holding, s.r.o., Na Brně 1972, Hradec Králové 500 06, Czech Republic.